

WE TEST TO ENSURE THAT SCHOOL IS SAFE

ZPÁTKY
DO ŠKOLY



WHY?



Preventive testing can enable our children to take part in safe in-person learning at school and to experience much needed personal contact with their teachers and peers.

Testing for the presence of the COVID-19 virus will take place during the return to in-person learning in April on the basis of an exceptional measure issued by the Ministry of Health. It concerns all groups of children, pupils, students and school and educational facility employees who are able to be physically present at school. It does not concern any children, pupils or students visiting a school or educational facility for the purpose of individual consultation or individual in-person learning.

Attendance at in-person learning is conditional upon testing.

Regular testing is a fundamental tool in the fight against the spread of infection among children at school. It does not, however, provide 100% protection. It will also be necessary to continue adhering to the other hygiene measures.

Each school will select a testing regimen according to its available options and as such you will be informed about the specific proposal and plan by your school.

The testing will be organised to enable safe and uninterrupted lessons in the most effective manner.

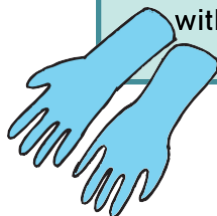


FFP2/FFP3



If your child is not feeling well or has any symptoms of COVID-19, they must stay at home.

The testing is only designated for children without any symptoms of an infectious illness.



WE TEST TO ENSURE THAT SCHOOL IS SAFE



WHERE?



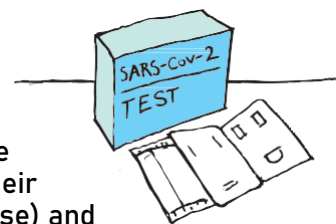
Every school will set aside a testing area according to its available options, but it must comply with the following fundamental rules:

- It is necessary to provide a place for the child to sit and a surface for them to put their things on (a chair, a desk and so on).
- A distance of at least 1.5 metres must always be maintained between the children.
- Testing can take place in any suitable school premises that can be ventilated or also outside, providing the outdoor temperature is between 15 and 30 °C.
- If the child is accommodated at a school boarding establishment or attends an after-school club before the start of lessons, they will be tested immediately upon arrival and will not then need to be retested at school.

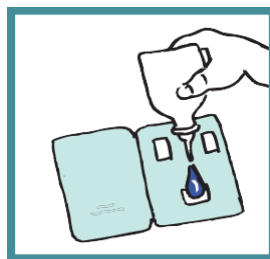
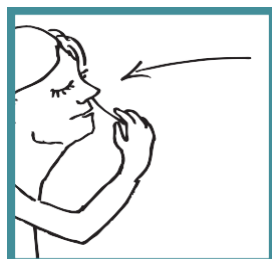
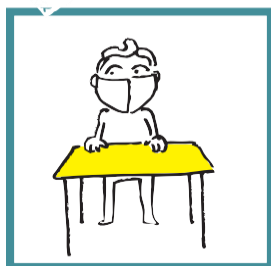
HOW?



The testing will be realised using non-invasive antigen tests. The children will take their own samples from the front section of their nose using a cotton bud (it is painless – it is like picking your nose) and then wait for the result.



The assistance of a parent or an individual appointed by the parents is possible during the testing of children during preschool education, younger primary school pupils and special school pupils.



WE TEST TO ENSURE THAT SCHOOL IS SAFE

POZITIVNÍ



THE RESULT

NEGATIVNÍ



The test is POSITIVE

Your child will go home and will not be allowed to attend lessons, if the test comes back positive



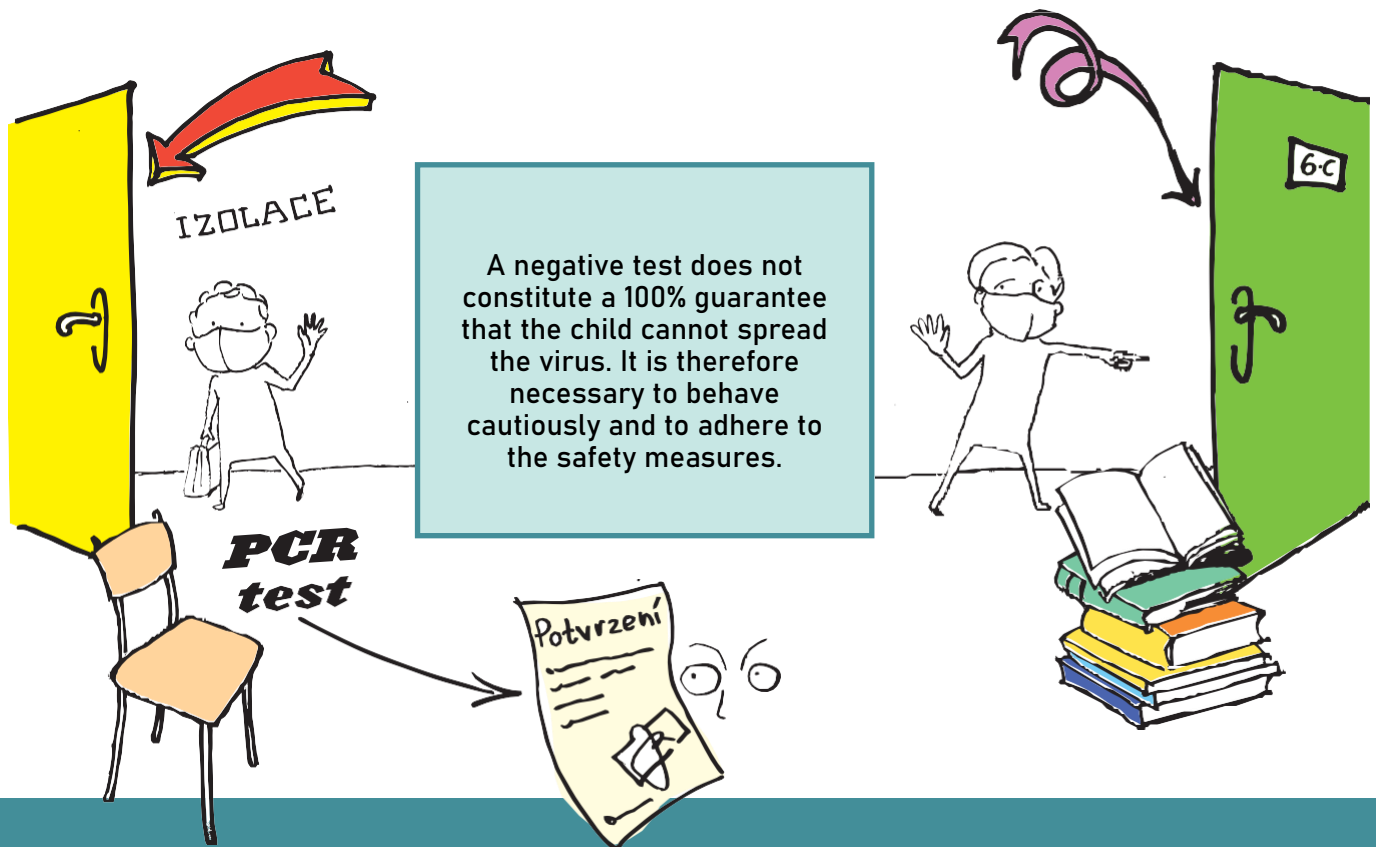
The test is NEGATIVE

If the test comes back negative, your child can continue with the lessons, unless decided otherwise due to the occurrence of an infection at the school.

Underage children – the school will contact you and you will come to pick up your child or will give your consent for your child to leave school unaccompanied. (Your child will wait in a special isolation room until you come to pick them up.)

Pupils or students who are of age – they will leave the school without any undue delay.

The school will provide positively tested children with confirmation of the fact that they have tested positive with an antigen test and it will then be necessary for a confirmation test to be performed as quickly as possible. The child should not go out in public until that time. It is further necessary to contact the child's paediatrician and request the issue of an e-application for the performance of a RT-PCR test at a healthcare facility.



WE TEST TO ENSURE THAT SCHOOL IS SAFE



WHAT IF AN INFECTION IS DISCOVERED IN THE CLASS?



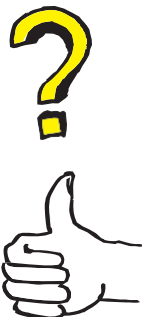
If a positive test appears in a group of tested individuals on a day other than the first day of in-person teaching in the given week, all the children, pupils and students who have been in contact with the positively tested individual during lessons (including the after-school club) during any of the previous 2 days will have to leave the school or wait to be picked up by their legal guardian along with the other pupils.



In the case of a positive AG test, the group of thus identified contacts will wait for information on the confirmation of the positive test finding with a RT-PCR test. Confirmation with a RT-PCR test is not required, if the school performs its testing with RT-PCR tests.



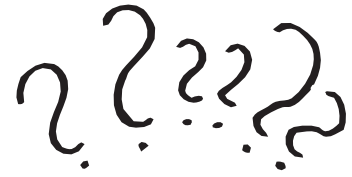
If an RT-PCR test provided by the school comes back positive or a confirmatory RT-PCR test confirms an infection in an individual tested with an AG test, the school will submit the information of the thus identified contacts to the appropriate Regional Hygiene Station which will order quarantine for given groups and the contacts of the positively tested individual (no contact with any other individuals and limited public movement is recommended prior to quarantine being ordered).



If the confirmatory RT-PCR test fails to confirm an infection in an individual who originally tested positive with an AG test, the individual in question will submit this result to the school without any undue delay and the school will then inform all the originally indicated contacts. All the individuals in question may then return to in-person lessons without the need for any further steps.

WE TEST TO ENSURE THAT SCHOOL IS SAFE

WHAT IF?



WHEN AND HOW OFTEN WILL TESTS BE PERFORMED AT SCHOOL?

The testing will take place at the start of the teaching day before lessons commence and it will be performed regularly according to the timetable that you receive from your school.



HAVE ALREADY HAD COVID-19 AT HOME. IS THE TEST NECESSARY?

WE Children who can submit a negative PCR test result or a negative POC antigen test (not older than 48 hours) and who do not have any symptoms of COVID-19 do not have to be tested. Those who have already had COVID-19 and for whom it is less than 90 days from their first RT-PCR test with a positive result also do not need to be tested. It is, however, necessary to substantiate this fact (for example, with confirmation from a doctor, a medical report or a laboratory report in either documentary or electronic form).



WHAT HAPPENS IF I DO NOT SEND MY CHILD TO SCHOOL?

Your child cannot participate in in-person lessons, if they are not tested. The school will record any such absence as having been excused, but it is under no obligation to provide your child with any remote learning. It is, however, advisable for the school to provide a commensurate form of support (for example, by sending weekly plans, enabling the child to connect to lessons online or providing individual consultation).

